



BAYERISCHE MOTOREN WERKE



# THE X7

PRICE LIST  
LAUNCHING APRIL 2019

**BMW EFFICIENT DYNAMICS.**  
LESS EMISSIONS. MORE DRIVING PLEASURE.



# CONTENTS

Page 1	Contents
Page 2	The new BMW X7 Introduction
Page 3	Exterior Equipment Highlights
Page 4	Interior Equipment Highlights
Page 5	Model Range – M50d Highlights
Page 7	Model Range – M Sport Highlights
Page 7	Model Range – xDrive30d / xDrive40i Highlights
Page 9	Optional Equipment Highlights
Page 11	BMW ConnectedDrive – BMW Live Cockpit Professional
Page 12	BMW ConnectedDrive – Connected Package Professional
Page 13	Technical Information
Page 14	Pricing Information
Page 17	BMW EfficientDynamics / Paintwork / Upholstery / Packages
Page 18	Interior Trims / BMW Individual Interior Trims / Transmission / Steering and Chassis
Page 19	Safety and Technology / Seats
Page 20	Interior Equipment
Page 21	Exterior Equipment
Page 22	Audio and Communication
Page 23	Light Alloy Wheels
Page 24	BMW Service Inclusive & Trackstar
Page 25	Code Glossary
Page 26	BMWConnectedDrive Services

[www.bmw.co.uk/X7](http://www.bmw.co.uk/X7)



BMW online. Find out more at  
[www.bmw.co.uk/online-sales](http://www.bmw.co.uk/online-sales)

# THE NEW BMW X7

First seen as the BMW Concept X7 iPerformance at the Frankfurt Motor Show in 2017, the new BMW X7 brings this concept to reality. Setting new benchmarks for presence, modernity, luxury and functionality, the new BMW X7 features an unparalleled interior experience as well as class-leading driving dynamics and innovative pioneering technology.

You are now more connected than ever before thanks to the new BMW ConnectedDrive offering on the BMW X7. Included as standard, the BMW Live Cockpit Professional and Connected Package Professional enhance the functionality of your Ultimate Driving Machine. Featuring Apple CarPlay® preparation, Concierge Services and Remote Services, the new BMW X7 ensures that you are kept connected with the outside world.

The pinnacle of X-celence.

## BMW EFFICIENT DYNAMICS

EfficientDynamics is BMW's award-winning programme of technologies designed to reduce CO<sub>2</sub> emissions and improve fuel economy, without compromising on performance or driving dynamics. These technologies are standard on every new BMW and could lower your fuel and tax costs, as well as ensure a lower benefit in kind tax rating for company car drivers. You can find out more about the benefits of BMW EfficientDynamics, as well as compare your own vehicle against the BMW X7 models at [www.bmw.co.uk/EfficientDynamics](http://www.bmw.co.uk/EfficientDynamics)



Auto Start-Stop function



Brake Energy Regeneration



ECO PRO Mode



Electric Power Steering



BMW EfficientLightweight

**BMW EFFICIENT DYNAMICS.**  
LESS EMISSIONS. MORE DRIVING PLEASURE.





## EXTERIOR

The first ever BMW X7 combines lavish presence and exclusivity with the versatile and agile driving characteristics expected from a Sports Activity Vehicle. From launch a choice of three six-cylinder engine variants are available, including the M50d M Performance model, with each trim level providing an exceptionally generous standard specification.

Ensuring its prominence on the road, the size of the new BMW X7 needs to be seen to be believed. Observed from any angle, the interplay between precise lines and sculpted surfaces portrays a charismatic assurance of modernity, presence and luxury. The presence of the new BMW X7 is also defined by bold features such as the eye-catching one-piece Kidney grille, the largest across the BMW range. Available as part of the Visibility package, the optional BMW Laserlights and standard 21" wheels also provide a powerful road presence.

Functionality is also demonstrated in the standard height-adjustable two-axle air suspension, third-row seating – which can comfortably accommodate two adults – and the optional xOffroad package, providing a pleasant driving experience and superior off-road handling.

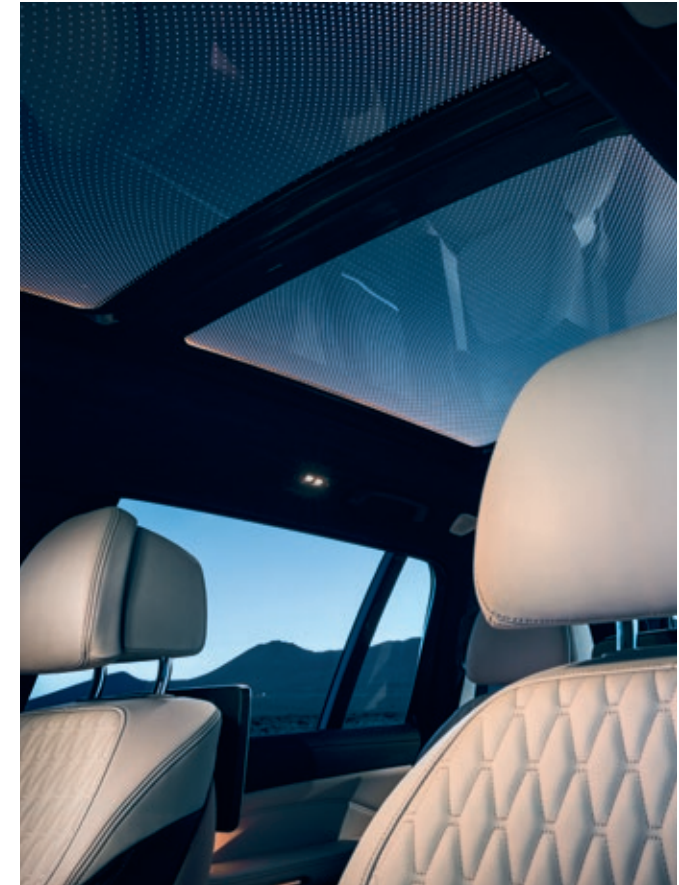


## INTERIOR

Individual Extended Merino leather upholstery and Comfort seats, offered as standard equipment, provide the utmost in comfort and luxury. To further enhance the luxurious feel within the interior, there is the option of the CraftedClarity glass application – handmade sculpted glass elements specifically for the gear lever, iDrive controller, Start/Stop button and volume control. Extend this luxury for your passengers with optional automatic air conditioning with five-zone control. Controlled by separate displays and allowing individual climate comfort for front, left and right rear seat passengers, and passengers in the third-row seats.

Boasting an optional six-seat configuration, the new BMW X7, which includes two captain-style Comfort seats in the second row, provides an enhanced rear-seat experience for passengers. Coupling the optional Sky Lounge Panoramic glass sunroof with the standard Ambient Lighting allows dynamic light flow throughout the new BMW X7 and creates an open sense of spaciousness and a luxurious atmosphere for any drive.

The modernity of the new BMW X7 is expressed through the innovative technology available as standard including the latest BMW Operating System 7.0, BMW Live Cockpit Professional and Parking Assistant Plus. For a truly exceptional sound experience in the new BMW X7, the optional Bowers and Wilkins 3D Diamond surround system has been specifically designed to deliver a custom theatre experience from the comfort of your BMW.





# MODEL RANGE

The new BMW X7 is available in xDrive30d, xDrive40i and M50d engine variants from launch, each providing a different level of standard specification. These pages highlight some of the equipment differences between them, for further details contact your local BMW Retailer.

**M PERFORMANCE**

## M50d HIGHLIGHTS In addition / replacement to M Sport models

- 22" M V-spoke style 755 M wheels, Bicolour Cerium Grey
- BMW TwinPower Turbo six-cylinder in-line diesel engine
- Door sill finishers with illuminated M50d designation, front and rear
- Exhaust tailpipes - single, left and right, Cerium Grey
- Kidney grille, Cerium Grey
- Loudspeaker system – harman/kardon
- Mirror caps, Cerium Grey
- M50d badge on tailgate, right, Cerium Grey
- M badge, left and right side panels, Cerium Grey
- M Sport differential
- M Sport exhaust system
- Side gill and trim Cerium Grey



X7 M50d

RRP from £85,215 inc. VAT

The model shown above is the new BMW X7 M50d. The models shown on these pages may feature optional equipment. Standard equipment may also vary depending on engine variant. Not all trim levels are available on all engine variants. For further details contact your local BMW Retailer.



# MODEL RANGE



## M SPORT HIGHLIGHTS In addition / replacement to xDrive30d / xDrive40i

- 21" M Double-spoke style 754 M wheels, Bicolour
- BMW Individual headlining, Alcantara Anthracite
- Door sill finishers with M designation
- Exterior trim, High-gloss Shadowline
- Finewood Fineline Black with High-gloss metal effect
- M aerodynamic bodystyling
- M designation on front side panels, left and right
- M Leather steering wheel
- M Sport braking system
- M-specific key
- M-specific pedals
- Roof rails, High-gloss Shadowline
- Tailpipe finishers in M Sport package-specific geometry

## xDrive30d HIGHLIGHTS

- 21" Y-spoke style 753 wheels, Bicolour
- Adaptive two-axle air suspension
- Ambient interior lighting – six pre-designed selectable light designs including dynamic function
- Air conditioning, automatic with four-zone control
- BMW Individual Extended Merino leather upholstery
- BMW Live Cockpit Professional, comprising:
  - Apps
  - BMW Connected+
  - BMW Emergency Call
  - BMW Teleservices
  - Intelligent Voice Control
  - Map updates
- BMW TwinPower Turbo six-cylinder in-line diesel engine
- Comfort access
- Comfort seats – front, electrically adjustable
- Connected Package Professional, comprising:
  - Apple CarPlay® preparation
  - Concierge Services
  - Connected Navigation
  - Connected Teaser
  - Real Time Traffic Information
  - Remote Services
  - Intelligent Functionalities
- Cruise control with brake function
- Eight-speed automatic transmission with Steptronic transmission and gearshift paddles
- Interior trim, Finewood Fineline Brown Stripe, High-gloss
- Panoramic glass sunroof
- Park Distance Control (PDC), front and rear
- Parking Assistant Plus
- Rain sensor with automatic headlight activation and windscreen wiper control
- Run-flat tyres
- Seat adjustment - front, electric with driver memory
- Seat heating, front and rear
- Soft-close doors
- Sport leather steering wheel, three-spoke
- Third-row seating
- WiFi hotspot

## xDrive40i HIGHLIGHTS

In addition / replacement to xDrive30d

- BMW TwinPower Turbo six-cylinder in-line petrol engine
- Petrol Particulate Filter



X7 M Sport

RRP from £72,630 inc. VAT

The new BMW X7 M Sport model shown above may feature optional equipment.



X7 xDrive40i

RRP from £72,130 inc. VAT

X7 xDrive30d

RRP from £70,130 inc. VAT

The new BMW X7 xDrive30d model shown above may feature optional equipment.



## OPTIONAL EQUIPMENT HIGHLIGHTS



### BOWERS & WILKINS DIAMOND SURROUND SOUND SYSTEM

Specifically designed to deliver a custom theatre experience from the comfort of your BMW. Includes a fully active 10-channel amplifier with a 1400W output and 16 speakers balanced throughout the car. The Quantum Logic surround with seven-band equaliser and three analogue crossover networks offers five sound settings ranging from 'Studio' to 'Cinema'. The carefully designed hole pattern in the speakers ensures maximum efficiency for a pure sound experience.

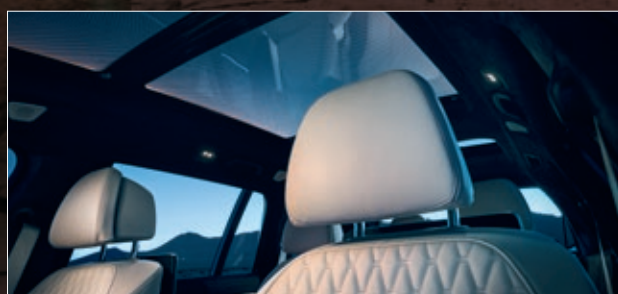
See page 22



### SIX-SEATER

The vehicle's six-seat design replaces the conventional second row seat bench with two individual Comfort Seats, each with their own armrests and cushioned headrests to provide the same level of functionality as the driver and front passenger in terms of comfort and seating position adjustment.

See page 19



### SKY LOUNGE PANORAMIC GLASS SUNROOF

A luxury Panoramic glass sunroof with integrated LED light graphics with illuminated graphic surfaces in the glass to provide a colourful light setting. There are six predefined colours that create a luxurious interior ambience, all of which can be selected in the iDrive menu.

See page 21



### VISIBILITY PACKAGE

An intelligent light system that illuminates the road for greater visibility without glaring other road users.

- Doubling the range of other headlights, BMW Laserlights allow you to see up to 600 metres in front

See page 18

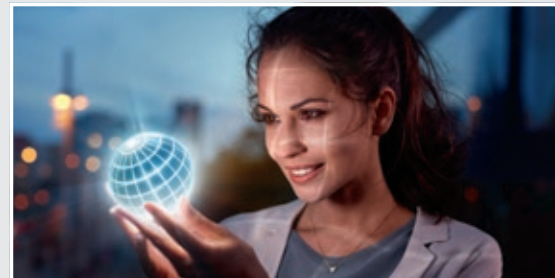


● BMW LIVE COCKPIT PROFESSIONAL. (6U3)

The brand new infotainment, navigation and multimedia system (BMW Operating System 7.0) provides cutting edge innovations as standard. Incorporating new generations of professional multimedia, BMW Live Cockpit Professional features touch-capable, high resolution control display, fully digital instrument panel and includes the ConnectedDrive digital services below:



● **BMW Connected+** provides seamless integration between your smartphone and your BMW, thus giving the benefit of personalised services at all times.<sup>1</sup>



● **Apps** makes it possible to operate smartphone apps, such as BMW Connected and web radio conveniently and securely via the iDrive Controller and Control Display.<sup>1</sup>



● **BMW Emergency Call** automatically establishes a direct link to the local emergency services and sends details of your vehicle location and severity of the accident.<sup>2</sup>



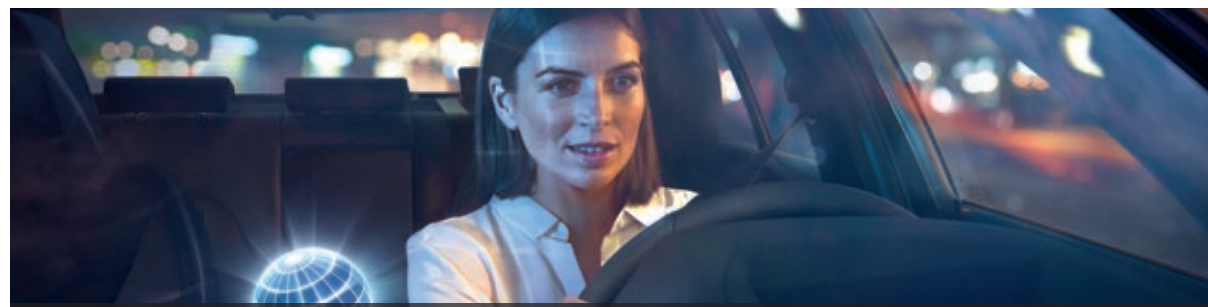
● **BMW TeleServices** transmits vehicle-specific service data and supports the processing of servicing appointments and to request help in the event of a breakdown.<sup>2</sup>



● **Map Updates** – Automatically update maps in your BMW this can be downloaded Over-the-Air via the on-board sim card or uploaded from a USB.<sup>1</sup>

● **Intelligent Voice Control** understands natural speech as well as linguistic varieties and dialects thanks to off board voice processing.<sup>3</sup>

The BMW Connected App.  
Your personal mobility assistant.



The BMW Connected App learns your mobility routines, reads your calendar and knows when you need to leave, providing you with a personal experience that is integrated into your everyday life. The App allows you to fully unleash the capabilities of BMW's innovative technologies intuitively through your smartphone.

Key  
● = Standard ○ = Optional The information above is subject to change. <sup>1</sup> = Available and active for three years. Can be extended or renewed thereafter at an extra cost. <sup>2</sup> = Available and active for the lifetime of the vehicle. <sup>3</sup> = Available and active for one year. Can be extended or renewed thereafter at an extra cost. <sup>4</sup> = Available and active for three months. Can be extended or renewed thereafter at an extra cost.

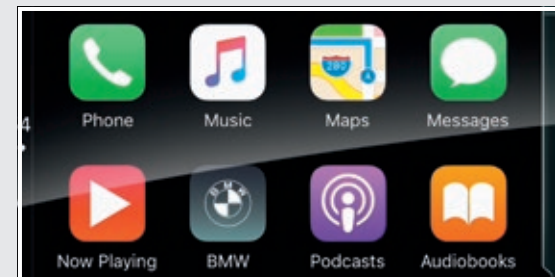
● CONNECTED PACKAGE PROFESSIONAL including: (6C4)



● **Remote Services** allows you to remain connected to your vehicle wherever you are, send destinations, find your vehicle as well as locking and unlocking your doors.<sup>1</sup>



● **Concierge Services** connects the driver to a BMW Call Centre agent who is available as their around-the-clock personal assistant.<sup>1</sup>



● **Apple CarPlay® preparation** enables wireless usage of your iPhone® in your vehicle via Apple CarPlay® and is operated via the vehicle's user interface.<sup>3</sup>



● **Real Time Traffic Information** supplies details about the location and duration of delays, also includes Hazard Preview and On-street Parking Information.<sup>1</sup>



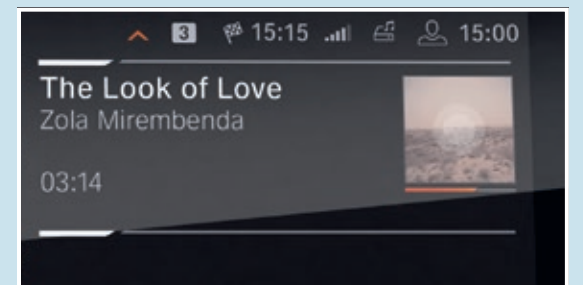
● **Connected Navigation** makes route planning easier, anticipates road conditions and provides estimated time of arrival, plus multiple map views with split screen options.<sup>1</sup>

CONNECTED TEASER

Available with Connected Package Professional and offers a three month trial of the following services:



**Microsoft Office 365** synchronises emails, contacts and calendar entries and enables their processing in the vehicle, plus Skype for Business calls can be joined with just one click.<sup>4</sup>



**Connected Music** provides a choice of music streaming directly to the vehicle via selected music providers.<sup>4</sup>

# THE NEW BMW X7

## TECHNICAL INFORMATION

Model	Power output (hp)	0-62 mph (secs)	Combined fuel consumption (mpg)*	CO <sub>2</sub> emissions (g/km)*
<b>PETROL</b>				
xDrive40i	340	6.1	32.5	198
xDrive40i M Sport	340	6.1	32.5	198
<b>DIESEL</b>				
xDrive30d	265	7.0	43.5	171
xDrive30d M Sport	265	7.0	43.5	171
M50d	400	5.4	40.4	185

### PRICES AND SPECIFICATIONS

BMW (UK) Limited reserves the right to alter prices and specifications without notice. BMW (UK) Limited has made every effort to ensure the accuracy of information but does not accept liability for any errors or omissions.

\* Figures are obtained in accordance with the new Worldwide Harmonised Light Vehicles Test Procedure (WLTP). Fuel consumption and CO<sub>2</sub> figures have been converted into NEDC-equivalent values for use with the current VED and BIK tax legislation. They are intended for comparisons between vehicles and may not be representative of what a user achieves under usual driving conditions.

## PRICING INFORMATION

Model	Basic price (excluding VAT)	VAT 20%	Retail price (including VAT)	On the road price	P11d value	BIK tax rate (2018 / 2019) <sup>1</sup>	VED band <sup>1</sup>	Insurance group
<b>PETROL</b>					<b>Automatic</b>			
xDrive40i	£60,108.33	£12,021.67	£72,130	£74,155	£72,860	37%	K	TBC
xDrive40i M Sport	£62,191.67	£12,438.33	£74,630	£76,655	£75,360	37%	K	TBC
<b>DIESEL</b>								
xDrive30d	£58,441.67	£11,688.33	£70,130	£72,155	£70,860	37%	J	TBC
xDrive30d M Sport	£60,525.00	£12,105.00	£72,630	£74,655	£73,360	37%	J	TBC
M50d	£71,012.50	£14,202.50	£85,215	£87,240	£85,945	37%	J	TBC

### VED RATES

Annual VED (second year onwards) is £450 for cars costing over £40,000 and is payable for five years. VED rates for brand new cars are determined by their CO<sub>2</sub> emissions figure. First year VED applies to the first year of ownership. Annual VED rates apply thereafter. The new BMW X7 models fall into the categories listed below:

CO <sub>2</sub> emissions (g/km)	Band J 171-190	Band K 191-225
First year VED (petrol)	-	£1,240
First year VED (diesel)	£1,240	-
Annual VED (second year onwards)	£140	£140

### ON THE ROAD PRICE

The recommended on the road price includes:

Delivery and BMW Emergency Service	£705
Number plates	£25
Vehicle first registration fee	£55
First year Vehicle Excise Duty	See left

Key

<sup>1</sup> = BIK tax rate and VED band dependent on chosen optional equipment. Insurance group figures refer to 50 Group Rating System.







# STANDARD AND OPTIONAL EQUIPMENT



## BMW EFFICIENT DYNAMICS

	xDrive40i	xDrive40i M Sport	xDrive30d	xDrive30d M Sport	M50d	Price
Auto Start / Stop	●	●	●	●	●	Std
Brake Energy Regeneration	●	●	●	●	●	Std
ECO PRO mode	●	●	●	●	●	Std
Electric Power Steering (EPS) with Servotronic	●	●	●	●	●	Std
High-precision direct injection	●	●	-	-	-	Std

Individual BMW EfficientDynamics features may be excluded, depending on the optional equipment chosen. Your BMW Retailer will be pleased to provide you with more information.

## PAINTWORK

		xDrive40i	xDrive40i M Sport	xDrive30d	xDrive30d M Sport	M50d	Price
Metallic	met	○	○	○	○	○	£0
Available in Arctic Grey, Black Sapphire and Mineral White							
Available in Carbon Black		-	○	-	○	○	£0
Available in Sunstone		○	○	○	○	○	£1,995
Non-metallic	uni	●	●	●	●	●	Std
Available in Alpine White							

## UPHOLSTERY

		xDrive40i	xDrive40i M Sport	xDrive30d	xDrive30d M Sport	M50d	Price
BMW Individual Extended Merino leather	VA	●	●	●	●	●	Std
Available in Black with Black colour world, Coffee with Black colour world, Ivory White with Black colour world and Tartufo with Black colour world							
BMW Individual Full Merino leather	VB	○	○	○	○	○	£4,995
Available in Ivory White / Night Blue with Black colour world							
Only with 5AU + 776							

## PACKAGES

Packages provide an intelligent selection of individual options at a lower combined price, as well as contributing to the resale value of the vehicle. Further options can still be specified even when a package is chosen.

		xDrive40i	xDrive40i M Sport	xDrive30d	xDrive30d M Sport	M50d	Price
M Sport Plus package	ZMS	-	○	-	○	-	£1,995
Comprises:							
- 1MA M Sport exhaust system							
- 1SP 22" M light alloy V-spoke style 755 M wheels, Bicolour Jet Black <sup>1</sup>							
- 420 Sun protection glass							
Premium package	ZGK	○	○	○	○	○	£2,750
Comprises:							
- 442 Heated and Cooled cupholder							
- 453 Seat ventilation, front							
- 4HB Heat comfort package, front							
- 4NM Ambient air package							
- 4NN Air conditioning, automatic with five-zone control							
- 4T7 Massage function, front							

Key  
 ● = Standard ○ = Optional - = Not available Only with = these options must be ordered together. <sup>1</sup> = 1XR 22" BMW Individual Y-spoke 758 l wheels available as a cost alternative.



## PACKAGES (CONT.)

		xDrive40i	xDrive40i M Sport	xDrive30d	xDrive30d M Sport	M50d	Price
Technology package	Z0J	○	○	○	○	-	£3,150
Comprises:							
- 5AU Driving Assistant Professional		-	-	-	-	○	£2,790
- 610 Head-up display							
- 688 Loudspeaker system – harman/kardon							
Package alternative:		○	○	○	○	-	£6,530
- 6F1 Bowers & Wilkins Diamond surround sound system (instead of 688)		-	-	-	-	○	£6,170
Visibility package	Z0C	○	○	○	○	○	£1,350
Comprises:							
- 5AZ BMW Laserlights							

## INTERIOR TRIMS

		xDrive40i	xDrive40i M Sport	xDrive30d	xDrive30d M Sport	M50d	Price
Finewood Ash Grain Black with open-poured Bronze effect	4KU	○	○	○	○	○	£0
Finewood Finition Black with High-gloss metal effect	4LM	-	●	-	●	●	Std
Finewood Finition Brown Stripe, High-gloss	4KR	●	○	●	○	○	£0
Finewood Poplar Grain Anthracite Brown, open-poured	4KT	○	○	○	○	○	£0

## BMW INDIVIDUAL INTERIOR TRIMS

		xDrive40i	xDrive40i M Sport	xDrive30d	xDrive30d M Sport	M50d	Price
Piano Black	4ML	○	○	○	○	○	£560
Ash Grain Silver Grey, High-gloss	4WW	○	○	○	○	○	£560

## TRANSMISSION

		xDrive40i	xDrive40i M Sport	xDrive30d	xDrive30d M Sport	M50d	Price
Sport automatic transmission	2TB	●	●	●	●	●	Std

## STEERING AND CHASSIS

		xDrive40i	xDrive40i M Sport	xDrive30d	xDrive30d M Sport	M50d	Price
Adaptive 2-axle air suspension	2VR	●	●	●	●	●	Std
Executive Drive Pro	2VS	○	○	○	○	-	£2,450
Only with 2VH (M50d models)		-	-	-	-	○	£3,450
Integral Active Steering	2VH	○	○	○	○	-	£1,195
Only with 2VS (M50d models)		-	-	-	-	○	£0
M Sport braking system	2NH	-	●	-	●	●	Std
M Sport differential	2T4	-	-	-	-	●	Std

Key  
 ● = Standard ○ = Optional - = Not available Only with = these options must be ordered together.





SAFETY AND TECHNOLOGY

		xDrive40i	xDrive40i M Sport	xDrive30d	xDrive30d M Sport	M50d	Price
Adaptive LED headlights	552	●	●	●	●	●	Std
BMW Laserlights Only with Z0C	5AZ	○	○	○	○	○	n/a*
Driving Assistant Professional Comprises: – Active Cruise Control – Approach control and person warning with city braking function – Crossroads warning with city braking function – Evasion aid – Lane change warning – Lane departure warning – Lane Keeping Assistant with active side collision protection – Speed Limit Assist – Steering and Lane Control Assistant – Wrong-way warning Only with Z0J	5AU	○	○	○	○	○	n/a*
Head-up Display Only with Z0J	610	○	○	○	○	○	n/a*
High-beam Assistant	5AC	●	●	●	●	●	Std
LED fog lights	5A1	●	●	●	●	●	Std
Parking Assistant Plus Comprises: – Lateral parking aid – Parking Assistant – Rear-view camera – Remote 3D View – Reversing Assistant – Surround View	5DN	●	●	●	●	●	Std
Run-flat tyres	258	●	●	●	●	●	Std
Tyre Pressure Monitoring	2VB	●	●	●	●	●	Std

SEATS

		xDrive40i	xDrive40i M Sport	xDrive30d	xDrive30d M Sport	M50d	Price
Comfort seats, front	456	●	●	●	●	●	Std
Heat comfort package, front Comprises: – Heated armrests in the front doors – Heated armrests in the front centre console – Steering wheel heating Only with ZGK	4HB	○	○	○	○	○	n/a*
Massage function, front Only with ZGK	4T7	○	○	○	○	○	n/a*
Seat adjustment – front, electric with driver memory	459	●	●	●	●	●	Std
Seat heating, front and rear	4HA	●	●	●	●	●	Std
Seat ventilation, front Only with ZGK	453	○	○	○	○	○	n/a*
Six-seater Not with 413	4U5	○	○	○	○	○	£595
Third-row seats	4UB	●	●	●	●	●	Std

Key  
 ● = Standard ○ = Optional - = Not available Only with = these options must be ordered together. Not with = these options are not available for ordering together.  
 n/a\* = Only available within package, see page 17-18 for package information.

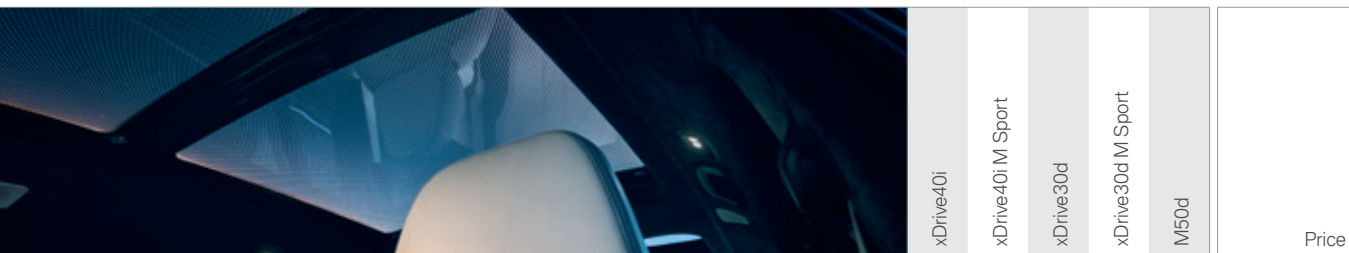


INTERIOR EQUIPMENT

		xDrive40i	xDrive40i M Sport	xDrive30d	xDrive30d M Sport	M50d	Price
Acoustic glazing	3KA	●	●	●	●	●	Std
Air conditioning, automatic with four-zone control	4NB	●	●	●	●	●	Std
Air conditioning, automatic with five-zone control Only with ZGK	4NN	○	○	○	○	○	n/a*
Ambient Air package Air ionisation and scent package provides a pleasant fragrance and improved air purification for the vehicle interior. Intensity of the scents can be controlled in three stages via iDrive controller or via a button in the air conditioning control panel. Only with ZGK	4NM	○	○	○	○	○	n/a*
Ambient lighting	4UR	●	●	●	●	●	Std
BMW Display key	3DS	●	●	●	●	●	Std
BMW Individual headlining, Alcantara Anthracite <sup>1</sup>	776	○	●	○	●	●	£1,150
BMW Individual instrument panel finished in leather	4M5	●	●	●	●	●	Std
CraftedClarity glass application	4A2	○	○	○	○	○	£575
Door sill finishers with BMW Individual designation	778	●	-	●	-	-	Std
Expanded exterior mirror package	4T8	●	●	●	●	●	Std
Heated and Cooled cupholder Only with ZGK	442	○	○	○	○	○	n/a*
Luggage compartment separating net Not with 4U5	413	○	○	○	○	○	£170
Luggage compartment package	418	●	●	●	●	●	Std
M leather steering wheel	710	-	●	-	●	●	Std
Roller sunblind, rear side windows	417	○	○	○	○	○	£675
Speedometer with kilometer reading	548	○	○	○	○	○	£0
Sport leather steering wheel	255	●	-	●	-	-	Std
Sun protection glass	420	○	○	○	○	○	£420
Travel and Comfort system Not with 6FH	4FL	○	○	○	○	○	£265

Key  
 ● = Standard ○ = Optional - = Not available Only with = these options must be ordered together. Not with = these options are not available for ordering together.  
 n/a\* = Only available within package, see page 17-18 for package information. <sup>1</sup> = In combination with BMW Individual Full Merino leather in Ivory White and Night Blue, contents is in Night Blue.





EXTERIOR EQUIPMENT

		xDrive40i	xDrive40i M Sport	xDrive30d	xDrive30d M Sport	M50d	Price
Aluminium running board	328	●	-	●	-	-	Std
Comfort Access	322	●	●	●	●	●	Std
Exterior trim, High-gloss Shadowline	760	○	●	○	●	●	£0
Exterior trim, Satin Aluminium	3MB	○	○	○	○	○	£0
M aerodynamics bodystyling	715	-	●	-	●	●	Std
M Sport exhaust system Only with ZMS (M Sport models)	1MA	-	○	-	○	●	n/a*
Panoramic glass sunroof	402	●	●	●	●	●	Std
Roof rails, High-gloss Shadowline Only with 760 Not with 3MB	3MC	○	●	○	●	●	£0
Roof rails, Satin Aluminium Only with 3MB Not with 760	3AT	●	○	●	○	○	£0
Sky Lounge Panoramic glass sunroof	407	○	○	○	○	○	£760
Soft-close doors	323	●	●	●	●	●	Std
Trailer towing hitch	3AC	○	○	○	○	○	£1,075
xOffroad package Comprises: - Four xOffroad modes: xSand, xRocks, xGravel and xSnow - Mechanical differential lock - Specific pedal and gearshift characteristics - Specific user interface - Functional sump guard, front and rear - xOffroad Driving Experience Control Not with 2VS	3E3	○	○	○	○	-	£2,595

Key  
 ● = Standard ○ = Optional - = Not available Not with = these options are not available for ordering together. n/a\* = Only available within package, see page 17-18 for package information.



AUDIO AND COMMUNICATION

		xDrive40i	xDrive40i M Sport	xDrive30d	xDrive30d M Sport	M50d	Price
BMW Live Cockpit Professional Comprises: - BMW Connected+ <sup>1,2</sup> - BMW Teleservices <sup>3</sup> - Intelligent Emergency Call <sup>3</sup> - Intelligent Voice Control <sup>2</sup> - Legal Emergency Call <sup>2</sup> - Over the Air Map Updates <sup>2</sup> - USB Map Updates <sup>2</sup> - Vehicle Apps <sup>2</sup> Further information can be found on pages 11-12	6U3	●	●	●	●	●	Std
BMW Gesture control	6U8	●	●	●	●	●	Std
BMW Online Services <sup>1,2</sup>	6AK	●	●	●	●	●	Std
BMW TeleServices <sup>3</sup>	6AE	●	●	●	●	●	Std
Bowers and Wilkins Diamond surround sound system Only with Z0J as package alternative	6F1	○	○	○	○	○	n/a*
Connected Package Professional Comprises the full functionality of BMW Live Cockpit Professional (6U3), plus: - Apple CarPlay <sup>®</sup> preparation <sup>1,4,5</sup> - Concierge Services <sup>1,2</sup> - Connected Navigation <sup>1,2</sup> - Connected Teaser <sup>6,7</sup> - Real Time Traffic Information <sup>1,2,8</sup> - Remote 3D View <sup>9</sup> - Remote Services <sup>1,3</sup> Further information can be found on pages 11-12	6C4	●	●	●	●	●	Std
DAB tuner	654	●	●	●	●	●	Std
Enhanced Bluetooth with wireless charging	6NW	●	●	●	●	●	Std
HiFi loudspeaker system	676	●	●	●	●	-	Std
Legal Emergency Call <sup>3</sup>	6AF	●	●	●	●	●	Std
Loudspeaker system – harman/kardon Only with Z0J (excluding M50d models)	688	○	○	○	○	●	n/a*
Rear-seat entertainment Professional Not with 4FL	6FH	○	○	○	○	○	£2,345
TV Function Plus	60A	○	○	○	○	○	£1,150
WiFi hotspot preparation <sup>10</sup>	6WD	●	●	●	●	●	Std

Key  
 ● = Standard ○ = Optional - = Not available n/a\* = Only available within package, see page 17-18 for package information. <sup>1</sup> = Requires a free BMW ConnectedDrive account. <sup>2</sup> = Active for three years, renewable thereafter at an additional cost. <sup>3</sup> = Active and available for the lifetime of the vehicle. <sup>4</sup> = Active for one year, renewable thereafter at an additional cost. <sup>5</sup> = Functions using a data connection will use data from the SIM card in the iPhone<sup>®</sup>. Additional data charges may be applied by the mobile network provider. Compatibility and functions may vary due to the model year of the iPhone<sup>®</sup> and the version of software installed on it. <sup>6</sup> = Includes Connected Music and Microsoft Office for a three month trial. For further details visit page 12. <sup>7</sup> = Available and active for three months. Can be extended or renewed thereafter at an extra cost. <sup>8</sup> = Includes Hazard Preview and On-Street Parking Information. <sup>9</sup> = Only in combination with 5DN. <sup>10</sup> = Data subscription costs apply and must be purchased separately.





LIGHT ALLOY WHEELS

		xDrive40i	xDrive40i M Sport	xDrive30d	xDrive30d M Sport	M50d	Run-flat tyres	Price
21" Y-spoke style 753, Bicolour	1XK	●	-	●	-	-	●	Std
21" Y-spoke style 752, Jet Black	1XE	○	-	○	-	-	●	£350
22" Multi-spoke style 757, Bicolour	1YC	○	-	○	-	-	●	£1,250
22" BMW Individual Y-spoke style 758 I	1XR	○	○	○	○	-	●	£1,945
		-	-	-	-	○	●	£350
In conjunction with ZMS		-	○	-	○	-	●	£350
21" M Double-spoke style 754 M, Bicolour	1PB	-	●	-	●	-	●	Std
22" M V-spoke style 755 M, Bicolour Jet Black	1SP	-	○	-	○	-	●	£1,595
22" M V-spoke style 755 M, Bicolour Cerium Grey	1Y7	-	-	-	-	●	●	Std



21" Y-spoke style 753, Bicolour      21" Y-spoke style 752, Jet Black      22" Multi-spoke style 757, Bicolour      22" BMW Individual Y-spoke style 758 I



21" M Double-spoke style 754 M, Bicolour      22" M V-spoke style 755 M, Bicolour Jet Black      22" M V-spoke style 755 M, Bicolour Cerium Grey

Key  
 ● = Standard    ○ = Optional    - = Not available

# BMW SERVICE INCLUSIVE & TRACKSTAR



## BMW SERVICE INCLUSIVE

Package covering the following service items for a period of 3 years / 36,000 miles.<sup>1</sup>

- Oil service
- Renew air filter
- Renew fuel filter (diesel models only)
- Renew microfilter
- Renew spark plugs (petrol models only)

Price from TBC

## BMW SERVICE INCLUSIVE BENEFITS

- Inflation proof service pricing
- Official BMW Service history provided
- Only trained BMW Technicians will operate on your vehicle
- Only genuine BMW parts used



## BMW TRACKSTAR

Locate and recover your vehicle if it is stolen with BMW Trackstar or BMW Trackstar Advance.

BMW Trackstar price from £399<sup>2</sup>

BMW Trackstar Advance price from £649<sup>2</sup>

## BMW TRACKSTAR BENEFITS

- 24/7 Trackstar Monitoring Centre
- Thatcham accredited
- Integrated motion sensor
- Pan-European protection



<sup>1</sup> = Terms and Conditions apply, find out more online at [www.bmw.co.uk/serviceinclusive](http://www.bmw.co.uk/serviceinclusive) further details.    <sup>2</sup> = Price excludes subscription. Please consult your local BMW Retailer for further details.    Content correct at time of going to print. Prices subject to change.



## CODE GLOSSARY

1MA	M Sport exhaust system	4HA	Seat heating, front and rear	688	Loudspeaker system – harman/kardon
255	Sport leather steering wheel	4HB	Heat comfort package, front	6AE	BMW TeleServices
258	Run-flat tyres	4KR	Interior trim, Finewood Fineline Stripe, Brown High-gloss	6AF	Legal Emergency Call
2NH	M Sport braking system	4KT	Interior trim, Finewood trim, Poplar Grain, Anthracite-Brown, open-pored	6AK	BMW Online Services
2TB	Sport automatic transmission	4KU	Interior trim, Finewood Ash Grain Black with open-poured Bronze effect	6AM	Real Time Traffic Information
2T4	M Sport differential	4LM	Interior trim, Finewood Fineline Black with High-gloss metal effect	6AN	Concierge Services
2VH	Integral Active Steering	4ML	Interior trim, Finewood Fineline Black with High-gloss metal effect	6AP	Remote Services
2VB	Tyre Pressure Monitoring	4M5	BMW Individual instrument panel, leather	6CP	Apple CarPlay® preparation
2VR	Adaptive two-axle air suspension	4ML	BMW Individual interior trim, Piano Black	6C4	Connected Package Professional
2VS	Executive Drive Pro	4NB	Air conditioning, automatic with four-zone control	6FH	Rear-seat entertainment Professional
322	Comfort Access	4NM	Ambient Air package	6F1	Bowers and Wilkins Diamond surround sound system
323	Soft-close doors	4NN	Air conditioning, automatic with five-zone control	6NW	Enhanced Bluetooth with wireless charging
328	Aluminium running board	4T7	Massage function, front	6U3	BMW Live Cockpit Professional
3AC	Towbar towing hitch	4T8	Expanded exterior mirror package	6U8	BMW Gesture control
3AT	Roof rails, Matt Aluminium	4U5	Six-seater	6WD	WiFi hotspot preparation
3DS	BMW Display key	4UB	Third row seating	710	M leather steering wheel
3E3	xOffroad package	4UR	Ambient lighting	715	M aerodynamics bodystyling
3KA	Acoustic glazing	4WW	BMW Individual interior trim, Finewood, Ash Grain Silver	760	Exterior trim, High-gloss Shadowline
3MB	Exterior trim, Satin Aluminium	548	Speedometer with kilometer reading	776	BMW Individual headlining, Alcantara Anthracite
3MC	Roof rails, High-gloss Shadowline	552	Adaptive LED headlights	778	Door sill finishers with BMW Individual designation
402	Panoramic glass sunroof	5A1	LED foglights	VA	BMW Individual Merino extended leather upholstery
407	Sky Lounge Panoramic glass sunroof	5AC	High-beam Assistant	VB	BMW Individual Full Merino leather upholstery
413	Luggage compartment separating net	5AU	Driving Assistant Professional	met	Metallic paintwork
417	Roller sunblind, rear side windows	5AZ	BMW Laserlights	uni	Non-metallic paintwork
418	Luggage compartment package	5DN	Parking Assistant Plus	ZGK	Premium package
420	Sun protection glass	60A	TV Function Plus	ZMS	M Sport Plus package
442	Heated & Cooled cupholder	610	Head-up Display	ZOC	Visibility package
453	Seat ventilation, front	654	DAB tuner	ZOJ	Technology package
456	Comfort seats, front	676	HiFi loudspeaker system		
459	Seat adjustment – front, electric with driver memory				
4A2	CraftedClarity glass application				
4FL	Travel and Comfort system				

## BMW CONNECTED DRIVE SERVICES

BMW ConnectedDrive keeps driver and vehicle connected with the outside world. Digital services, driver-focused technologies and driver assistance systems provide more comfort, more entertainment and more safety. Increase your driving pleasure – with BMW ConnectedDrive.

For further information on BMW ConnectedDrive and the General Terms and Conditions of Service for ConnectedDrive, please see: [www.bmw.co.uk/connecteddrive-information](http://www.bmw.co.uk/connecteddrive-information)

The BMW ConnectedDrive Hotline is available on: +44 (0) 800 561 0555 from Monday to Friday 8am – 7pm and Saturday to Sunday 9am – 5pm.

**General information**

BMW (UK) Ltd, Summit ONE, Summit Avenue, Farnborough, Hampshire, GU14 0FB (hereinafter referred to as “BMW”) provides the customer with certain vehicle-related information and assistance functions (hereinafter called “Services”) under the name of “BMW ConnectedDrive”. BMW collects, stores or processes car-related data in compliance with applicable law and only to the extent necessary to provide the Services. BMW does not collect, store or process personal data in course of the Services – except where this is explicitly stated in the following description of the individual Services. In the case of Services that require personal data to be collected, stored and processed so that such Services can actually be provided, BMW informs customers of this in advance by providing this data protection notice. The Services are provided by means of a SIM card installed in the vehicle.

**BMW ConnectedDrive Services duration**

Connected Music	3 month trial
Microsoft Office 365	3 month trial
In-Car Experience	3 month trial
Apple CarPlay® Preparation	1 year
Apps	3 years
BMW Connected+	3 years
BMW Online Services	3 years
Concierge Services	3 years
Intelligent Voice Control	3 years
Map Updates	3 years
Real Time Traffic Information	3 years
BMW Emergency Call	Active for the lifetime of the vehicle
BMW Teleservices	Active for the lifetime of the vehicle
Legal Emergency Call	Active for the lifetime of the vehicle.
Remote Services	Active for the lifetime of the vehicle

**Deactivation**

The customer may have the BMW ConnectedDrive Services “TeleServices” (6AE) and “BMW Emergency Call” (6AC) deactivated at any time at an authorised BMW Centre, a regional BMW branch or an authorised BMW workshop. Deactivation of this Service will also deactivate the SIM card installed in the vehicle. **This results in the Emergency Call in the vehicle also not functioning.** The other Services can also be deactivated by the customer (from August 2014) via the BMW ConnectedDrive Customer Portal (“My BMW ConnectedDrive”).





BAYERISCHE MOTOREN WERKE

More about BMW  
Tel. 0800 325 600  
[www.bmw.co.uk](http://www.bmw.co.uk)



BMW UK on Facebook  
[www.facebook.com/bmwuk](http://www.facebook.com/bmwuk)

Valid from November 2018.